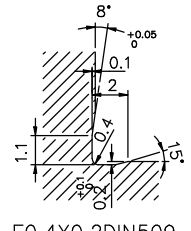
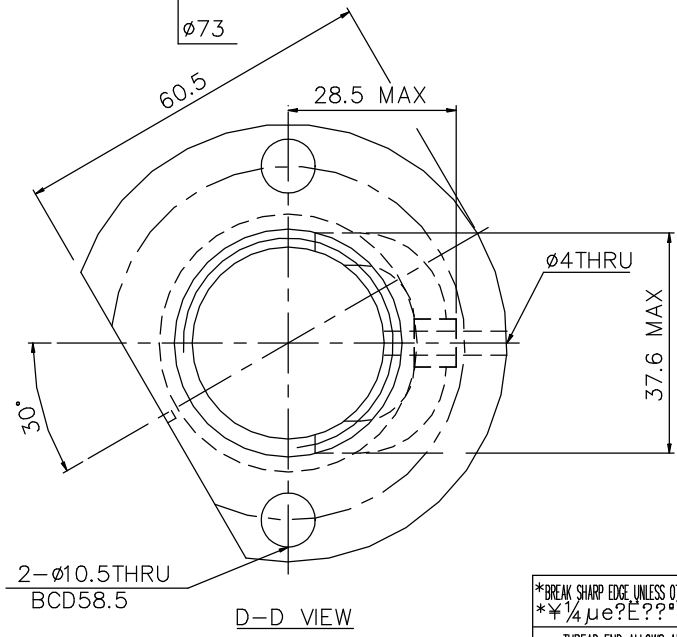
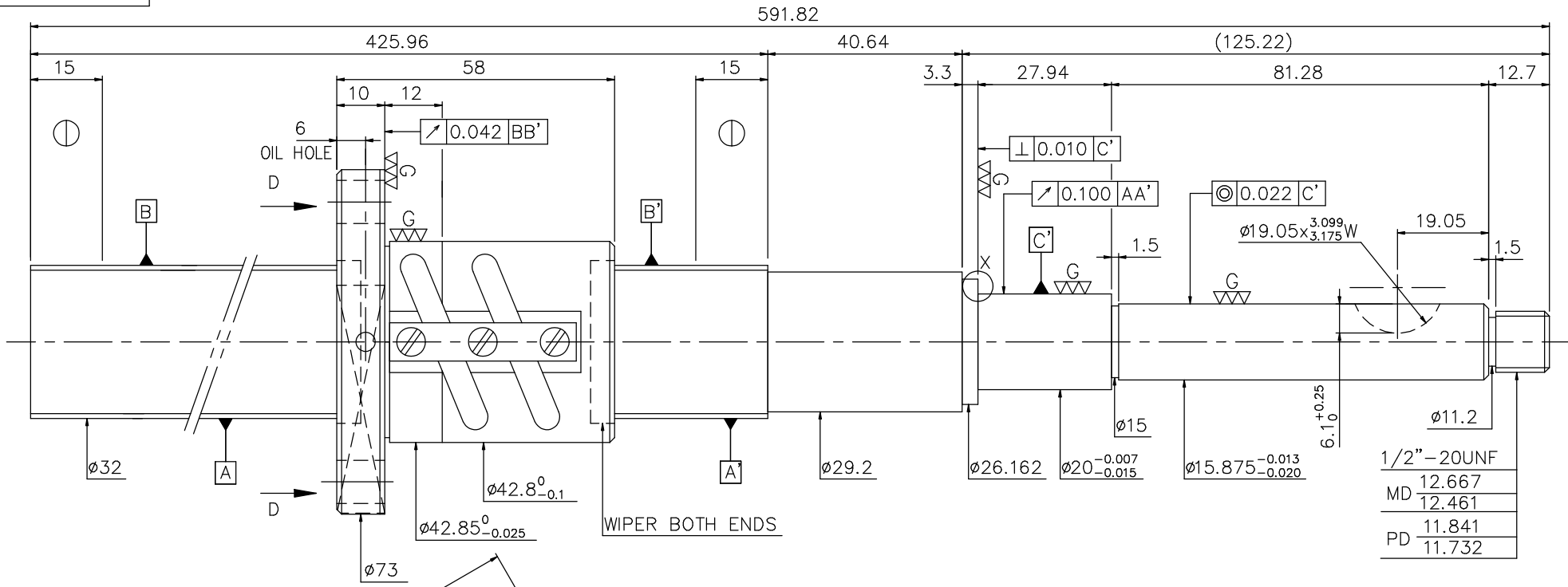


A10JSCA1

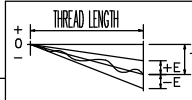
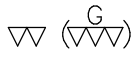


X DETAIL

- 1. MAX AXIAL LOAD: \_\_\_\_\_ kgf
- 2. MAX BALLSCREW ROTATIONAL SPEED: \_\_\_\_\_ rpm
- DN VALUE: \_\_\_\_\_
- ACCELERATION = \_\_\_\_\_ m/sec<sup>2</sup>
- 3. MAX FEED RATE: \_\_\_\_\_ m/min

PRELOAD (kgf)	113
R.D	29.124
S.F (kgf)	0.04~1.36
DRAG TORQUE (kgf-cm)	0.10~4.00
LUBRICATION	_____
DIRECTION OF TURN	L.H
PC DIA.	32.4
BALL DIA.	3.175
BACKLASH	0
CIRCUIT	2.5*2
LEAD ANGLE	2.86°
DYNAMIC (kgf)	1702
STATIC (kgf)	5098
LEAD	5.08

SPEC: L32-5.08B2-FSV-425.96-591.82-0.05



UNCHAMFERED USE	<input type="checkbox"/> R0.5	<input type="checkbox"/> R1	<input type="checkbox"/> R	SCALE
ROUGH M/C	25°	6.3°	0.4g	1: X
FIN M/C	30°	3.0°	0.4g	
GRD	300	600	1200	
UNTOL DIMN mm	UP	6	30	120
TO	±0.1	±0.2	±0.3	±0.4
OVER	1200	2400	2400	
	±0.5	±0.8	±1.0	±1.5

MATAL	SH: CF53	DATE	11.29.'01
	NT: SNCM220	DWG	SAÄÖÄE
THREAD BALL TRACK	HRC 56 ~ 62	APPD	
CISTR	HIWIN STD.	PROCESS NO.	G E
DWG.NO.	A10JSCA1		

*BREAK SHARP EDGE UNLESS OTHER SPECIFIED	CUSTOMER DRAWING NO.
*¼μE??1HRO	5MAX
① THREAD END ALLOWS ABOVE LENGTH OUT OF HARDNESS TOLERANCE	MC TYPE
	AXIAL TYPE

E300: 0.05

HIWIN® BALLSCREWS

DATE	MODIFICATION	APPROVED

\* PLEASE IGNORE CHINESE CHARACTERS WHICH ARE FOR OUR REFERENCE ONLY.